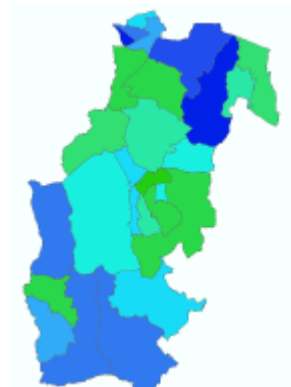


A targeting strategy for domestic energy efficiency in Sevenoaks

An action plan to address domestic energy efficiency locally.



David Shewan
CEN
September 2004



This report is part of the Energy Saving Trust Hotspots Innovation Programme, a partnership between 20 Local Authorities in South West London and Kent

A targeting strategy for domestic energy efficiency in Sevenoaks

Contents

1. Introduction	3
1.1 Background: the Hotspots project	3
1.2 Project partners	4
<hr/>	
2. Analysis	5
2.1 Summary	5
2.2 Data coverage	7
2.3 Housing analysis by ward	7
2.4 Housing analysis by census output area	11
2.5 Demographic analysis	16
<hr/>	
3. Proposed action plan	20
<hr/>	
Appendix 1: Future work	22

1. Introduction

This report is a detailed analysis of the potential for domestic energy efficiency installations in Sevenoaks borough, and has been completed in partnership with the Sevenoaks BC as part of the Energy Saving Trust Hotspots Innovation Programme.

The report provides a profile of the neighbourhoods in the borough where there is most potential for the installation of domestic energy efficiency measures by residents. It is the aim of the report to provide a framework for the coordinated promotion of energy efficiency measures in the borough.

In particular, the report identifies 'HotSpots' for energy efficiency targeting. These area areas where the promotion of energy efficiency measures will be most effective.

1.1 Background: the Hotspots project

The report has been completed as part of the Hotspots project. The project is a partnership of organisations in South West London and Kent with an interest in domestic energy efficiency. The project is designed to bring together the large amount of data that has been collected about domestic energy efficiency in order to target the promotion of energy efficiency measures to residents.

Many organisations in the public sector have responsibilities and commitments to facilitate energy efficiency improvements in domestic homes. Key among these organisations are Local Authorities, regional Energy Efficiency Advice Centres, Energy Suppliers, and the Energy Saving Trust. These organisations typically also collect data to provide tailored advice to householders, or to measure progress towards HECA and other statutory targets. However, the data has typically not been used to target the installation of measures in households.

The Hotspots project meets this opportunity, and will facilitate energy efficiency improvements in domestic homes by collating this householder data in order to find and target the geographical areas with most potential for energy efficiency improvements. The project will also provide match funding to assist promotional activities in each partner borough in terms of part-funding for promotional activity from the Energy Saving Trust and up to 60% subsidies on energy efficiency measures for householders through EDF Energy's Energy Efficiency Commitment funding.

The project represents a partnership between 20 partner Local Authorities and two partner Energy Efficiency Advice Centres with support from EDF energy and

the Energy Saving Trust. The project is part-funded by the Energy Saving Trust until 2006, and aims to provide a framework which the project partners can use for the coordination of the facilitation of energy efficiency improvements in domestic homes.

1.2 Project partners

The project is led by Creative Environmental Networks and the London Borough of Hillingdon, and receives core funding from the Energy Saving Trust. Creative Environmental Networks is a not for profit environmental company that runs the two regional Energy Efficiency Advice Centres in South West London and Kent.



The following organisations are project partners. The project covers the area of the 20 Local Authority partners below.

- Ashford Borough Council
- Canterbury City Council
- Creative Environmental Networks
- London Borough of Croydon
- Dartford Borough Council
- Energy Saving Trust
- Gravesham Borough council
- Kent Energy Centre
- Royal Borough of Kingston upon Thames
- London Borough of Hillingdon
- Maidstone Borough Council
- Medway Council
- London Borough of Merton
- London Borough of Richmond upon Thames
- Sevenoaks Borough Council
- Shepway Borough Council
- London Borough of Sutton
- Swale Borough Council
- Thanet Borough Council
- Tonbridge and Malling Borough Council
- Tunbridge Wells Borough Council
- London Borough of Wandsworth

2. Analysis

The analysis below uses existing datasets to determine the areas of Sevenoaks where there is maximum potential for the uptake by householders of domestic energy efficiency measures.

2.1 Summary

The first part of the analysis aims to find the areas of the borough where the domestic housing has high potential for energy efficiency improvements. The analysis has focussed on loft and cavity wall insulation potential (see section 2.1.2).

The analysis has only been possible where there is sufficient Home Energy data coverage, so before the analysis was started the data coverage was investigated (see section 2.2). The analysis concluded that in Sevenoaks the data coverage is in general very good: there is sufficient data to conduct a meaningful analysis at ward level, even for an analysis at census output area level across most of the borough. A census output area is a sub-ward classification, containing approx. 60-200 households as illustrated in Figure 1. (Appendix 2 contains suggestions for future data gathering work to make the data coverage uniform.)



Figure 1: Sevenoaks: ward boundaries shown in black; census output area boundaries shown in grey

This analysis of home energy efficiency potential by ward is described in section 2.3, and by census output area in section 2.4, and HotSpot areas at each level are tentatively identified in these sections. The patterns of uninsulated lofts are likely to be quite independent of the pattern for houses with uninsulated cavity walls so the analysis has been conducted in two parts. The analysis by census output area has higher spacial resolution, so is potentially more useful for targeting. However, there are more data points available at the ward level, so the data is more reliable. This issue is discussed in detail in the sections below.

The second part of the analysis (see section 2.5) concerns population, housing type, and tenure. The strategy is designed with the overarching aim of reducing CO₂ emissions through improved energy efficiency, and the demographic data has been used to target the 'able to pay'. We are aiming to target residents with the aim of maximum uptake of energy efficiency measures, so we should seek:

- householders who own or who are buying their home
- householders who have significant disposable income
- householders who live in houses rather than flats.

Census data has been used to produce this population / housing type / tenure analysis. It has then been used as an overlay for the home energy efficiency data: in this section the HotSpots tentatively identified in sections 2.3 and 2.4 are confirmed or discarded based on the suitability of the population, housing type, and tenure.

The strategy is not designed to target fuel poverty, although it acknowledges that there is scope for a similar approach to target people who have to use a large proportion of their income to keep their homes sufficiently heated. We aim to publish a sister strategy designed to take this approach before the end of 2004.

2.1.1 Data sources

The data analysis has made use of three main data sources. These are:

- Home Energy Check data, collected by the local Energy Efficiency Advice Centres and owned by the Energy Saving Trust; this data has only been available at ward level, but this may change in future editions of the strategy.
- Home Energy Survey data, collected by the Local Authorities in order to report on the energy efficiency of the borough to the government, and meet their Home Energy Conservation Act (HECA) responsibilities;
- Data from the 2001 Census, available from the Office for National Statistics.

There is potential for additional data to be integrated with the report. Additional Home Energy Survey and Home Energy Check data will increase the significance of the analysis. If original data can be incorporated from the Local Authority's Home Condition Survey this will also increase the significance of the analysis. We are working to progress this work and will aim to incorporate this information into the second editions of these Strategies in 2005.

2.1.2 Choice of energy efficiency measures

Although there are a wide variety of energy efficiency measures available for housing, the study has focussed on loft and cavity wall insulation, as they are both effective and cheap compared with other measures, especially in the present climate of increasing fuel prices. Loft and cavity wall insulation are

available to householders for about £300 per measure before subsidies. Through Hotspots, subsidies of 40-60% will be available allowing the measures to pay for themselves within 2-3 years. This makes them suitable as investment measures, and promotion to householders will result in high takeup.

Measures such as efficient heating systems, double glazing, and solid wall insulation are all comparable with loft and cavity effective in terms of energy efficiency but are typically more expensive by a factor of 4-10. This makes them measures that should be installed during the normal course of household refurbishment and maintenance, rather than as an investment measures. Potential for installation of these measures has therefore been judged outside the scope of this study.

2.2 Data Coverage

The Home Energy data coverage in Sevenoaks is reasonably good.

When the data was collated by ward, the 95% confidence intervals were calculated as being similar to or smaller than the size of the 10 category classification intervals used in the analysis below.

When the data was collated by census output area, the confidence intervals were larger. For the purposes of the analysis below, 6 categories have been used, and census output areas have been excluded from the analysis where their 75% confidence interval was significantly larger than the size of the category classification intervals. 225 of the 361 census output areas in Sevenoaks have been excluded; this is not ideal, but does make it one of the better surveyed boroughs of the 20 Hotspots boroughs.

[Appendix 2 contains suggestions for future data gathering work to make the data coverage uniform.]

2.3 Housing analysis by ward

The ward level data analysis has been conducted using Home Energy Check data from the Energy Saving Trust and Home Energy Survey data, collected by the Local Authorities. The data is a compilation of data collected between 1999 and 2004.

2.3.1 Cavity Wall insulation

The map (figure 2) and table (table 1) overleaf show the proportion of unfilled cavity walls in Sevenoaks by Ward.

The map shows that the cavity wall 'Hotspots' wards have no particular pattern in the borough. The wards with a bold outline have poor data coverage and have therefore been discounted from consideration.

Figure 2: proportion of unfilled cavity walls in Sevenoaks by ward. Wards with poor data coverage are outlined bold

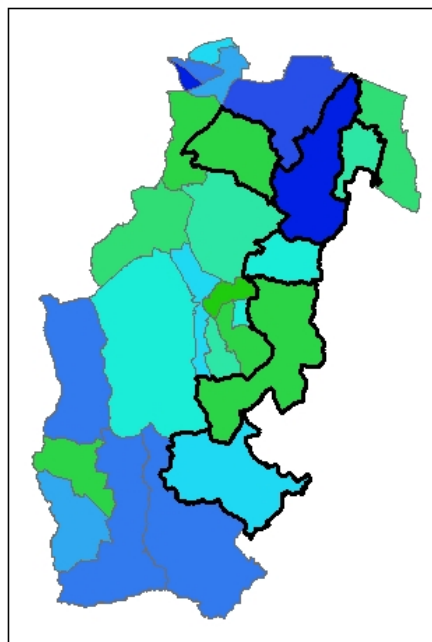
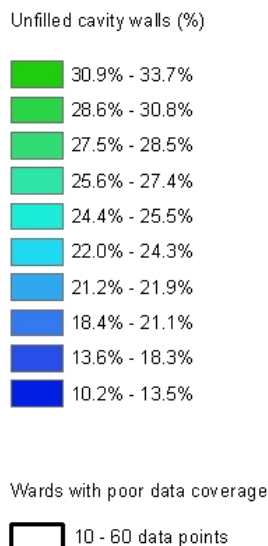


Table 1 shows more specifically that there is a dramatic range in the potential for cavity wall insulation in the various wards, with 3.3 times more potential in Sevenoaks Northern Ward (33%) compared with Swanley St Mary's Ward (10%).

Ward Name	Housing with unfilled cavity walls
Sevenoaks Northern Ward	33%
Edenbridge North and East Ward	30%
Eynsford Ward*	30%
Seal and Weald Ward*	30%
Crockenhill and Well Hill Ward	29%
Sevenoaks Town and St. John's Ward	29%
Halstead, Knockholt and Badgers Mount Ward	28%
Hartley and Hodsoll Street Ward	28%
Otford and Shoreham Ward	27%
Ash Ward*	26%
Sevenoaks Kippington Ward	26%
Brasted, Chevening and Sundridge Ward	25%
Kemsing Ward*	25%
Sevenoaks Eastern Ward	25%
Dunton Green and Riverhead Ward	24%
Hextable Ward	24%
Leigh and Chiddingstone Causeway Ward*	23%
Cowden and Hever Ward	21%
Edenbridge South and West Ward	21%
Swanley Christchurch and Swanley Village	21%

Ward	
Penshurst, Fordcombe and Chiddingstone Ward	20%
Swanley White Oak Ward	20%
Westerham and Crockham Hill Ward	20%
Farningham, Horton Kirby and South Darenth Ward	18%
Fawkham and West Kingsdown Ward*	13%
Swanley St. Mary's Ward	10%

Table 1: proportion of unfilled cavity walls in Sevenoaks by ward. Wards with poor data coverage are marked *.

Based on this data, the top 4 wards with sufficient data coverage (those with potential higher than 28%) are tentatively designated 'Hotspots'.

2.3.2 Loft Insulation

The map (figure 3) and table (table 2) overleaf shows the proportion of completely uninsulated lofts in Sevenoaks by Ward. The map shows that the uninsulated loft 'Hotspots' have a different pattern from the cavity wall insulation 'Hotspots'.

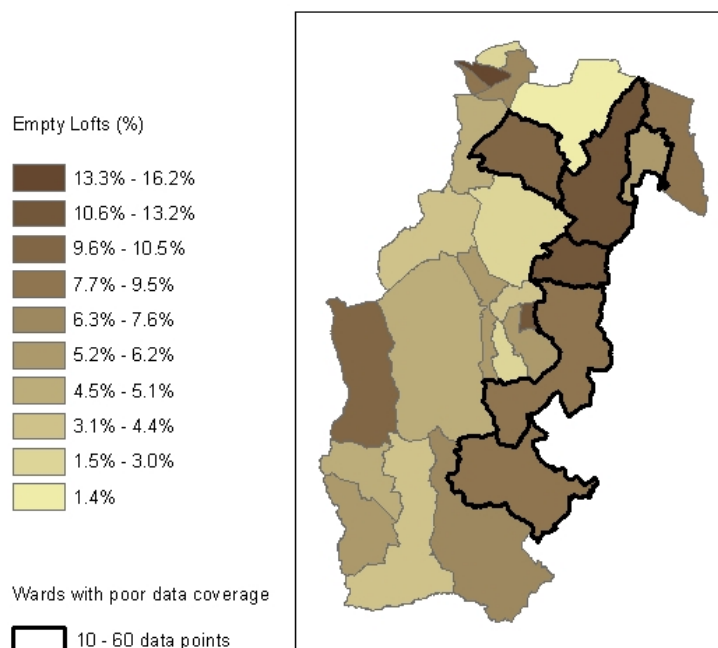


Figure 3: proportion of empty lofts in Sevenoaks by ward. Wards with poor data coverage are outlined bold.

Table 2 overleaf shows the loft insulation potential per ward. Several of the wards showing highest potential have poor data coverage. The 4 wards with sufficient data coverage and potential of 9% or greater are tentatively designated 'Hotspots'.

Ward Name	Housing with empty lofts
Swanley White Oak Ward	16%
Sevenoaks Eastern Ward	13%
Fawkham and West Kingsdown Ward*	11%
Kemsing Ward*	11%
Eynsford Ward*	10%
Westerham and Crockham Hill Ward	10%
Leigh and Chiddingstone Causeway Ward*	9%
Seal and Weald Ward*	9%
Swanley St. Mary's Ward	9%
Hartley and Hodsoll Street Ward	8%
Penshurst, Fordcombe and Chiddingstone Ward	7%
Swanley Christchurch and Swanley Village Ward	7%
Ash Ward*	6%
Dunton Green and Riverhead Ward	6%
Sevenoaks Town and St. John's Ward	6%
Crockenhill and Well Hill Ward	5%
Edenbridge South and West Ward	5%
Brasted, Chevening and Sundridge Ward	4%
Edenbridge North and East Ward	4%
Halstead, Knockholt and Badgers Mount Ward	4%
Cowden and Hever Ward	3%
Hextable Ward	3%
Sevenoaks Kippington Ward	3%
Sevenoaks Northern Ward	3%
Otford and Shoreham Ward	2%
Farningham, Horton Kirby and South Darenth Ward	1%

Table 2: proportion of empty lofts in Sevenoaks by ward. Wards with poor data coverage are marked *.

2.4 Housing analysis by census output area

A census output area is a sub-ward area classification, containing approximately 60-200 households as illustrated in Figure 1 on page 5. There are 361 census output areas in Sevenoaks, of which 136 have sufficient data points for analysis (see section 2.2). The census output area data analysis can be used in combination with the more broad brush ward level analysis in order to inform a very effective targeting approach, with general publicity across the HotSpot wards, and specific publicity to individual houses in the Hotspot census output areas.

2.3.1 Overview

The census output area level data analysis has been conducted using Home Energy Survey data, collected by the Local Authority. The data is a compilation of data collected between 1999 and 2004.

As described in the data coverage section (section 2.2) the confidence intervals were rather larger for the data when collated by census output area than by ward. For this reason, for the purposes of the analysis below, 5 categories have been used, and census output areas have been excluded from the analysis where their 75% confidence interval was significantly larger than the size of the category classification intervals. On the maps in this section these census output areas are left blank.

There are too many census output areas to be feasibly listed in the text (as the wards were listed in section 2.2), but the wards have been shown on the maps labelled with the numbers given in table 3 below.

Ward Name	Ward Code
Ash Ward	0
Brasted, Chevening and Sundridge Ward	1
Cowden and Hever Ward	2
Crockenhill and Well Hill Ward	3
Dunton Green and Riverhead Ward	4
Edenbridge North and East Ward	5
Edenbridge South and West Ward	6
Eynsford Ward	7
Farningham, Horton Kirby and South Darenth Ward	8
Fawkham and West Kingsdown Ward	9
Halstead, Knockholt and Badgers Mount Ward	10
Hartley and Hodsoll Street Ward	11
Hextable Ward	12
Kemsing Ward	13
Leigh and Chiddingstone Causeway Ward	14
Otford and Shoreham Ward	15

Penshurst, Fordcombe and Chiddingstone Ward	16
Seal and Weald Ward	17
Sevenoaks Eastern Ward	18
Sevenoaks Kippington Ward	19
Sevenoaks Northern Ward	20
Sevenoaks Town and St. John's Ward	21
Swanley Christchurch and Swanley Village Ward	22
Swanley St. Mary's Ward	23
Swanley White Oak Ward	24
Westerham and Crockham Hill Ward	25

Table 3: key to the ward labelling in the maps of this section

NB The maps in this section have the potential to be misleading due to the fact that census output areas have similar populations but rather different areas depending on population density. This means that larger areas on the map marked with shading indicating high potential do not necessarily indicate large potential, and for the purpose of targeting, small areas may be better. For this reason census area boundaries are shown on all maps.

2.3.2 Cavity Wall insulation

Figure 4 overleaf shows the pattern of potential for cavity wall insulation in Sevenoaks by census output area.

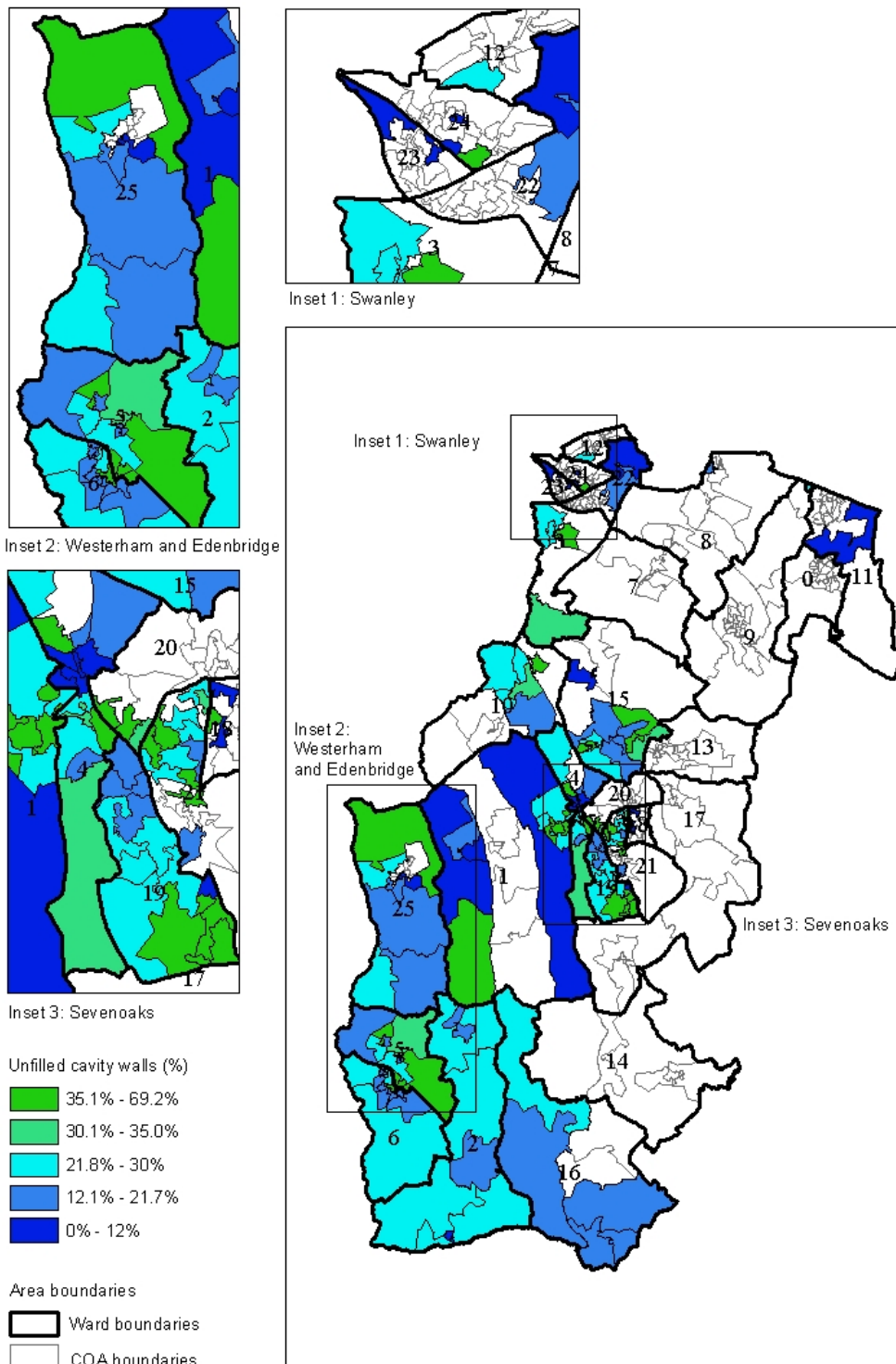


Figure 4: proportion of unfilled cavity walls in Sevenoaks by census output area. Wards are labelled using the key numbers in table 3.

This analysis does seem to show a slightly different pattern to that shown by the ward analysis, but it should be noted that Census output areas have similar populations but very different areas, so the large patches of green on

the map generally indicate areas of sparse but high potential, and the analysis at census output area level does agree broadly with the analysis at ward level.

However, this is not the rule, and the pockets of very high potential are not confined to the Hotspot wards.

The main map shows high potential in the relatively densely populated areas of North and South Sevenoaks town, Swanley, Edenbridge and Marlpit Hill. In addition there are areas of more sparsely populated high potential in the South West of the borough.

The census output areas with more than 30% potential are listed in table 4 below, and are tentatively designated 'Hotspots'. This information in itself is not transparent, but has been included because the Census Output area codes can be used by Local Authority data departments to produce mailing lists of individual houses.

Census output area code	Housing with unfilled cavity walls	Census output area code (cont'd)	Housing with unfilled cavity walls
29UKGW0011	35%	29UKGR0008	43%
29UKHM0007	50%	29UKGW0002	33%
29UKGL0001	37%	29UKHB0003	36%
29UKGL0007	44%	29UKHB0005	33%
29UKGL0009	37%	29UKHB0007	41%
29UKGL0010	40%	29UKHB0009	40%
29UKGL0013	36%	29UKHB0011	44%
29UKGN0001	43%	29UKHE0011	46%
29UKGN0007	33%	29UKHF0001	36%
29UKGP0005	39%	29UKHF0002	35%
29UKGP0012	44%	29UKHF0012	60%
29UKGP0013	31%	29UKHF0013	37%
29UKGP0016	32%	29UKHG0001	41%
29UKGQ0001	69%	29UKHG0004	31%
29UKGQ0003	36%	29UKHG0005	54%
29UKGQ0005	31%	29UKHH0004	33%
29UKGQ0009	31%	29UKHH0008	35%
29UKGQ0010	35%	29UKHH0009	44%
29UKGQ0012	42%	29UKHH0012	41%
29UKGQ0013	46%	29UKHL0004	43%

Table 4: cavity wall insulation tentative 'Hotspot' census output areas

2.3.3 Loft insulation

Figure 5 shows the pattern of potential for loft insulation in Sevenoaks by census output area. As with the cavity wall insulation map, the broader pattern agrees with the analysis by ward with potential concentrated in the Wards already identified as Hotspots.

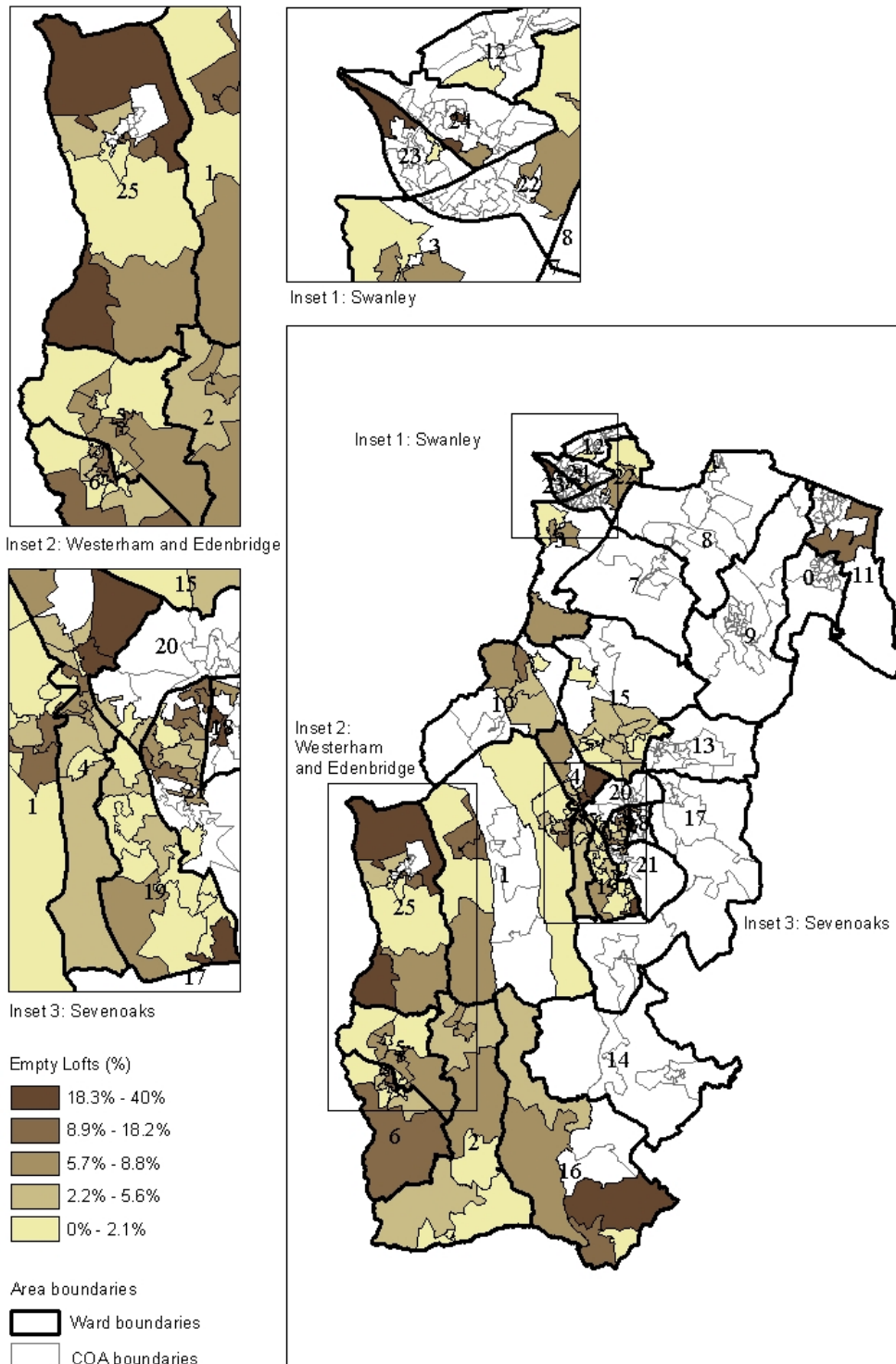


Figure 5: proportion of empty lofts in Sevenoaks by census output area. Wards are labelled using the key numbers in table 3.

The census output areas with more than 12% potential are listed in table 4 overleaf, and are tentatively designated 'Hotspots'. As for the Cavity Wall insulation, the information in table 5 is in itself is not transparent, but has been included because the Census Output area codes can be used by Local Authority data departments to produce mailing lists of individual houses.

Census output area code	Housing with empty lofts
29UKGX0007	14%
29UKHL0012	27%
29UKHL0020	20%
29UKHM0006	25%
29UKHM0007	20%
29UKGP0003	33%
29UKGP0006	40%
29UKGR0007	18%
29UKGR0008	15%
29UKHC0005	20%
29UKHE0011	20%
29UKHE0013	20%
29UKHF0002	23%
29UKHH0004	16%
29UKHK0001	25%
29UKHM0010	13%

Table 5: loft insulation tentative 'Hotspot' census output areas

As might be expected the areas with higher loft insulation potential generally correspond with the more rural areas of the borough, and the older town areas.

2.5 Demographic analysis

The demographic analysis has been conducted to screen the hotspots identified in the previous sections for the purposes of targeting. The census in 2001 provides a huge variety of demographic information, including information about:

- economic activity of householders
- tenure of households
- type of household (ie houses or flats)

We are ideally seeking:

- householders who can afford to pay for measures
- owner occupier householders

In addition, for cavity wall insulation we are seeking householders who live in houses rather than flats.

In general Sevenoaks has a high proportion of householders in the higher income brackets, a high level of owner occupancy, and a high number of houses rather than flats. This is all positive for the project.

2.5.1 Analysis at ward level; confirmation of 'HotSpots'

Cavity wall Hotspots

All of the provisional cavity wall hotspot wards have very favourable housing and population for a promotion of cavity wall insulation, and are listed in table 6 below as confirmed hotspots.

Ward Name	Housing with unfilled cavity walls
Sevenoaks Northern Ward	33%
Edenbridge North and East Ward	30%
Crockenhill and Well Hill Ward	29%
Sevenoaks Town and St. John's Ward	29%

Table 6: cavity wall insulation 'Hotspot' wards

Loft Insulation Hotspots

All of the provisional loft insulation hotspot wards have favourable housing and population for a promotion of loft insulation, and are listed in table 6 below as confirmed hotspots.

Ward Name	Housing with empty lofts
Swanley White Oak Ward	16%
Sevenoaks Eastern Ward	13%
Westerham and Crockham Hill Ward	10%
Swanley St. Mary's Ward	9%

Table 7: loft insulation 'Hotspot' wards. Areas marked * are also loft insulation Hotspots.

2.5.2 Analysis at census output area level; confirmation of 'HotSpots'

The census output areas tentatively identified as Hotspots were filtered using census data.

Cavity wall Hotspots

All census output areas with less than 50% of householders:

- in the upper income groups
- owner occupiers
- houses (rather than flats)

were removed from the original list of proposed Hotspots. This excluded 2 of the originally proposed 40 Hotspot census output areas. The remaining areas

are confirmed as 'Hotspot' areas, and are shown in Table 7 below. Areas marked * are also loft insulation Hotspots.

Census output area code	Housing with unfilled cavity walls	Census output area code (cont'd)	Housing with unfilled cavity walls
29UKGW0011	0.35	29UKGR0008*	0.43
29UKHM0007*	0.5	29UKGW0002	0.33
29UKGL0001	0.37	29UKHB0003	0.36
29UKGL0007	0.44	29UKHB0005	0.33
29UKGL0009	0.37	29UKHB0007	0.41
29UKGL0010	0.4	29UKHB0009	0.4
29UKGL0013	0.36	29UKHB0011	0.44
29UKGN0001	0.43	29UKHE0011*	0.46
29UKGN0007	0.33	29UKHF0001	0.36
29UKGP0005	0.39	29UKHF0002*	0.35
29UKGP0012	0.44	29UKHF0013	0.37
29UKGP0013	0.31	29UKHG0001	0.41
29UKGP0016	0.32	29UKHG0004	0.31
29UKGQ0003	0.36	29UKHG0005	0.54
29UKGQ0005	0.31	29UKHH0004*	0.33
29UKGQ0009	0.31	29UKHH0008	0.35
29UKGQ0010	0.35	29UKHH0009	0.44
29UKGQ0012	0.42	29UKHH0012	0.41
29UKGQ0013	0.46	29UKHL0004	0.43

Table 7: cavity wall insulation 'Hotspot' census output areas

Loft Insulation Hotspots

All census output areas with less than 50% of householders:

- in the upper income groups
- owner occupiers

were removed from the original list of proposed Hotspots. This excluded 1 of the originally proposed 16 Hotspot census output areas. The remaining areas are confirmed as 'Hotspot' areas, and are shown in Table 8 below. Areas marked * are also cavity wall insulation Hotspots.

Census output area code	Housing with empty lofts
29UKGX0007*	14%
29UKHL0020	20%
29UKHM0006	25%
29UKHM0007	20%
29UKGP0003	33%
29UKGP0006	40%
29UKGR0007	18%
29UKGR0008*	15%
29UKHC0005	20%
29UKHE0011*	20%

29UKHE0013	20%
29UKHF0002*	23%
29UKHH0004*	16%
29UKHK0001	25%
29UKHM0010	13%

Table 8: loft insulation 'Hotspot' census output areas. Areas marked * are also cavity wall insulation Hotspots.

3. Proposed action plan

The HotSpots project is conceived as a tool for Local Authorities, Energy Efficiency Advice Centres, Regional Authorities and so on to use in the effective promotion of energy efficiency measures to householders. The Hotspots project has some budget for publicity, but we aim to work closely with Local Authorities and other interested partners to

The Hotspots project has a publicity budget over 2 years to promote energy efficiency measures using the findings in each of the 20 partner Local Authorities. This budget will be divided as evenly as possible between the partner areas and will be used to fund core activities as described below. However, there will be considerable scope for the core activities to be significantly strengthened by linking closely with energy efficiency promotional activities of Local Authorities and other partners.

There is considerable scope for additional activity to link with each of the activities described below. CEN can provide support with this, from providing lists of Hotspot areas not yet mailed, to providing designs and materials and support with complementary activities.

Timescale

We plan to conduct the publicity in October, November, and early December 2004, to coincide with the onset of winter.

Branding

As demonstrated in this report, the cavity wall insulation hotspots and the loft insulation hotspots are quite different. With this in mind we will be aiming for two discrete messages.

We will be aiming to support the brands currently existing (the Sevenoaks council KASH scheme), but we are keen to use an attention grabbing message that links the local area directly. We propose a '(many people in XXX area) haven't got much upstairs' 'teaser' message for loft insulation, and a '(many people in XXX area) have got cavities?' 'teaser' message for cavity wall insulation.

Activity 1: Press releases.

We plan three press releases between October and December. These will be sent direct to local papers, and in partnership with Local Authority press officers.

We hope to be able to work with the councillors of Hotspot wards in press release related publicity activities.

Activity 2: Direct mailings

We plan to write to about 1250 households in Hotspot areas in each borough. There would be potential to target additional households with Local Authority support.

Activity 3: Street / outdoor posters

We are planning two or three street / outdoor posters (to be displayed in bus shelters, shopping areas, etc) in hotspot areas. The poster design will be customised to suit the specific area where the poster is located. There would be potential for additional posters with Local Authority support.

Activity 4: Targeting of discrete districts.

We plan to distribute leaflets and small posters and through local distribution points (such as libraries, restaurants, shops) in Hotspot areas of the borough. The posters will be designed with the messages already described, and will be customised to the local area. If the distributions could be arranged by the Local Authority we could divert budget to other activities.

We have not got resources to distribute letters and leaflets to houses in Hotspot areas, but we would recommend this activity in small Hotspot areas, and would provide support with materials.

Activity 5: Advertisements in Local Authority magazines.

We plan to arrange an advertisement and some editorial about the project in the Local Authority magazine.

Appendix 1: Future work

Additional data

Additional data gathering

Of the total 361 census output areas in Sevenoaks, 225 have less than 10 surveys each and a further 56 census output areas with less than 20 surveys. If future data gathering mailings were to concentrate on these census output areas, the data analysis would be much more reliable, and would be possible across the whole of Sevenoaks with greater precision.

We can provide details of these areas, including mailing lists or lists of full postcodes of the households within these areas, on request.

Home condition survey

The Local Authority home condition survey includes information that could be used to increase the data resolution of future strategies. However, we have had compatibility problems with home condition survey databases. If we can access home condition survey data in a suitably compatible format we will incorporate it into the HotSpots project.

Evaluation and future strategy editions

We are planning to publish a second HotSpots strategy in September 2005.

This will include any extra data that we can access in the meantime, and the strategy will also include an evaluation of the energy efficiency promotion outlined in section 3 for the winter of 2003 / 2004. This will give us a good indication of the effectiveness of the HotSpots approach, which may be modified based on the findings of this strategy.