



Case Study - Thomas More School

Thomas More School Plugs into the Sun!

Pupils at Thomas More School are now harnessing the power of the sun through the installation of photovoltaic (PV) solar panels. A launch event was held at the school comprising a solar assembly followed by classroom workshops with all manner of renewably powered gadgets. Thomas More School received funding of £5,500 from EDF Energy, £2000 from the Community Renewables Initiative (CRI), £2000 from DfES, £7000 from the Photovoltaic Major Demonstration Programme and support from the Renewable Energy Action for London (REAL) initiative to install the system.

Tackling Climate Change

The 2.5kWp PV system mounted on the swimming pool roof will generate 1,875 kWh of electricity per annum for use in the school, with surplus electricity being sold to the National Grid. It is estimated that use of the photovoltaic panels will result in 806kg of carbon dioxide emission savings each year.

Education Through Action

In a recent speech, Peter Hain MP said, "Challenges posed by climate change require us all to work for a cleaner world. The Government is taking the matter seriously and wants to see everyday public buildings such as schools and hospitals benefit from clean energy sources such as solar power." Thomas More School is reaping the benefits already and believes that action to mitigate the effects of climate change is the ideal way to educate the next generation.

The display unit is being used to monitor energy production, which enhances both the educational aspects of the project and also helps pupils and parents alike understand the environmental benefits of renewable energy.

Want to know more?

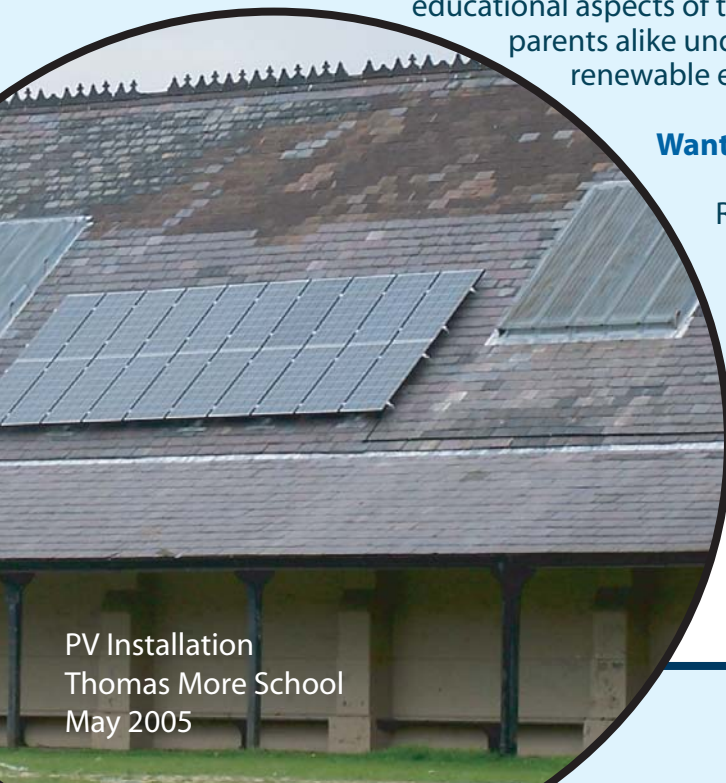
Residents and community groups can seek support for installing renewable energy in homes or public buildings through contacting the REAL project team on 020 8683 6683.

Key Points

Technology
2.5kWp grid connected photovoltaics (PV) system

Funding
100% secured through EDF Energy, the CRI, the DfES and the PV MDP

Collaborators
**Thomas More School
Renewable Energy Action
For London (REAL)
Chiltern Future Energy**



PV Installation
Thomas More School
May 2005

Creative Environmental Networks, Ambassador House
Brigstock Road, Thornton Heath, CR7 7JG
Tel: 020 8683 6600 Fax: 020 8683 6601
Email: enquiries@cen.org.uk Web: www.cen.org.uk

