

REAL Headlines

Since the last issue of the REAL Update in April, the partnership has continued to support communities, businesses and the public sector with their renewable energy projects:

- 56 clients supported across 23 boroughs
- 27 grant/funding applications submitted
- 7 installations complete

Greenness next to Godliness for Parchmore Methodist Church

With the recent announcement made by the Archbishop of Canterbury that the Church of England is to embark on a 'green reformation', Parchmore Methodist Church Youth and Community Centre is aiming to install renewable energy. Working closely with the REAL project team, the Centre is planning to install a 12m² Solar Water Heating system on its south-facing roof.

Croydon Communities go Solar

St James the Great School in Thornton Heath saw the launch of its Photovoltaic (PV) panels on 20th July 2004. The 2.16kWp PV system will generate approximately 1,600 units of electricity each year for use in the School's buildings. The launch event was attended by the Mayor of Croydon and was followed by a solar car workshop, facilitated by the REAL project team and Year 4 teachers.

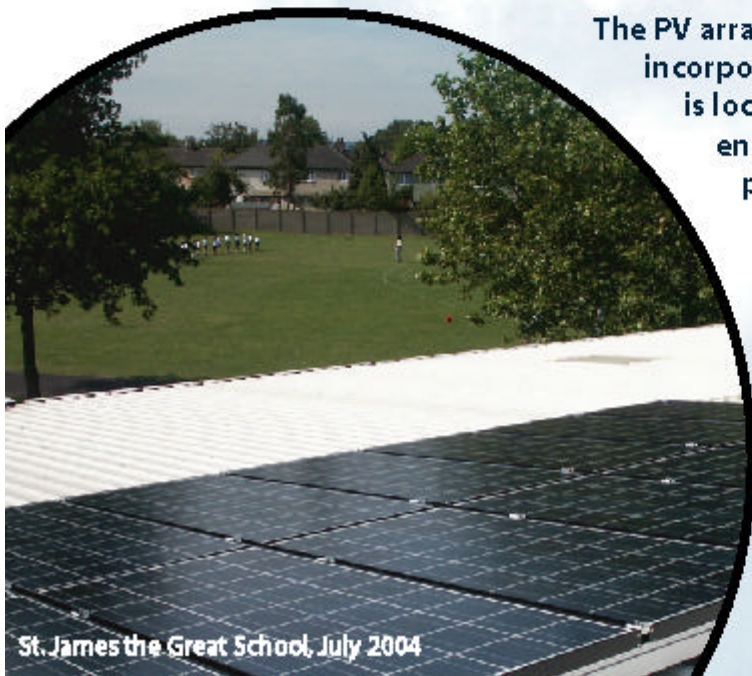
Valley Park Healthy Living Centre, has installed 3.5kWp of solar roof tiles. The Centre, comprising of a medical centre, UK online Centre, community hall and Sure Start Nursery, will prove instrumental in engaging with the local community on sustainable energy matters.

The PV array is one of several 'green' features incorporated into the new development and is located above the Sure Start Nursery, ensuring renewable energy becomes a part of everyday living for visiting youngsters.

Community Schools

Renewable Energy Network

The project team has been successful in securing £25,000 in funding from EDF Energy to establish a Community Schools Renewable Energy Network.



St. James the Great School, July 2004



Valley Park Healthy Living Centre,
August 2004

Working with schools in Westminster and Croydon, the project team plans to install a range of renewable energy technologies, including a small wind turbine.

The project team will also work with teachers to develop sustainable energy educational materials aligned with the curriculum, ensuring that pupils learn the importance of energy conservation.

Renewable Energy Training for London Planning Departments

To accompany the publication of Planning Policy Statement (PPS) 22 on Renewable Energy, the REAL project team is providing renewable energy training to a number of Local Authority planning departments across London. The training is directed at Development Control teams and covers renewable energy technologies, policies and best practice for their implementation.

REAL Annual Review - Have your say!

It will soon be 1 year since the launch of REAL and we want to hear your views. Is the initiative delivering on its promises? What are the potential areas for development? The REAL Annual Review, to be held on November 18th 2004, will provide you with an opportunity to:

- Learn about progress to date
- Input into future direction for the initiative, both across London and locally in your Borough

Invitations to the event will be distributed over the next few weeks.

Want to know more?

Could you, or a community you know, benefit from the installation of renewable energy measures? Would you simply like to find out more about REAL?

Call the REAL team today on 020 8683 6683!



This project is part-funded by the EST's Innovation Programme

